



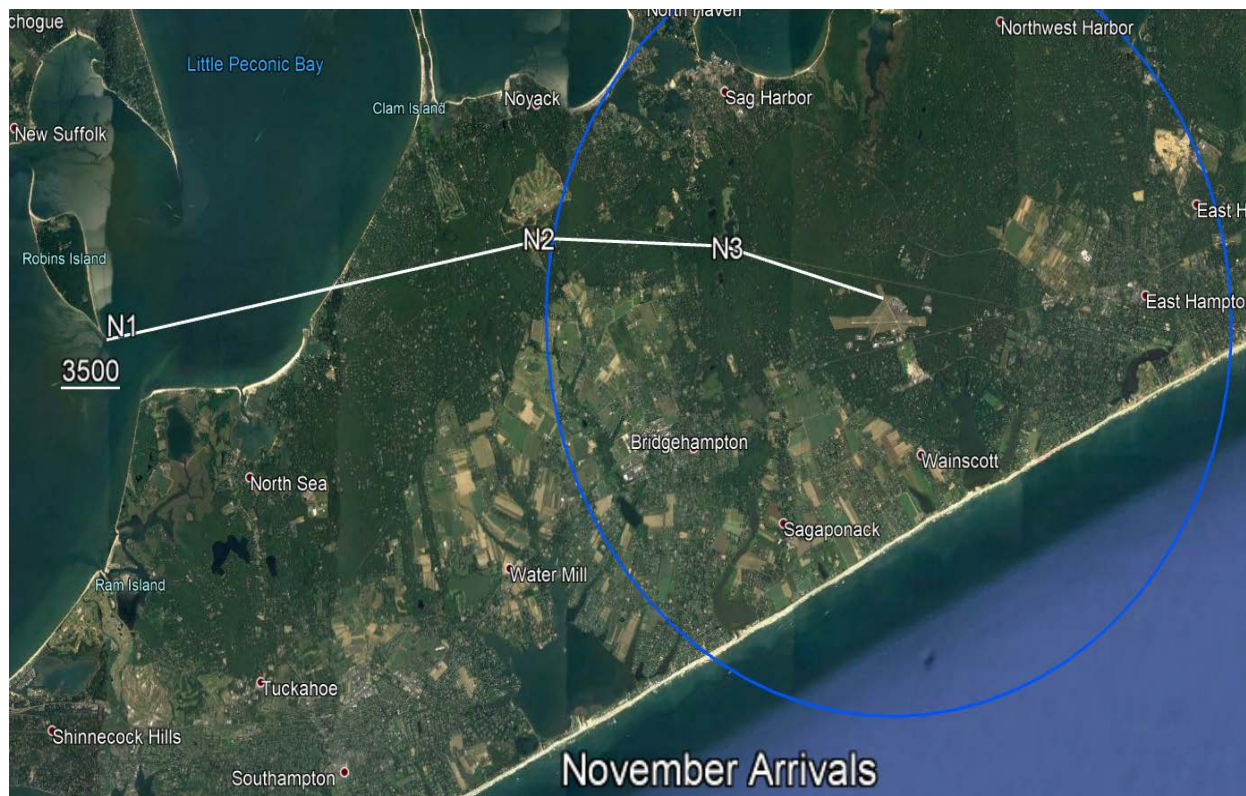
TOWN OF EAST HAMPTON AIRPORT  
200 DANIELS HOLE ROAD  
WAINSCOTT, NY 11975

**Helicopter Arrival and Departure Routes**  
**East Hampton Airport**

This document has been developed in collaboration with Robinson Aviation, Inc, and Eastern Region Helicopter Council for use in helicopter traffic management and noise abatement at East Hampton Airport.

**November Arrival:**

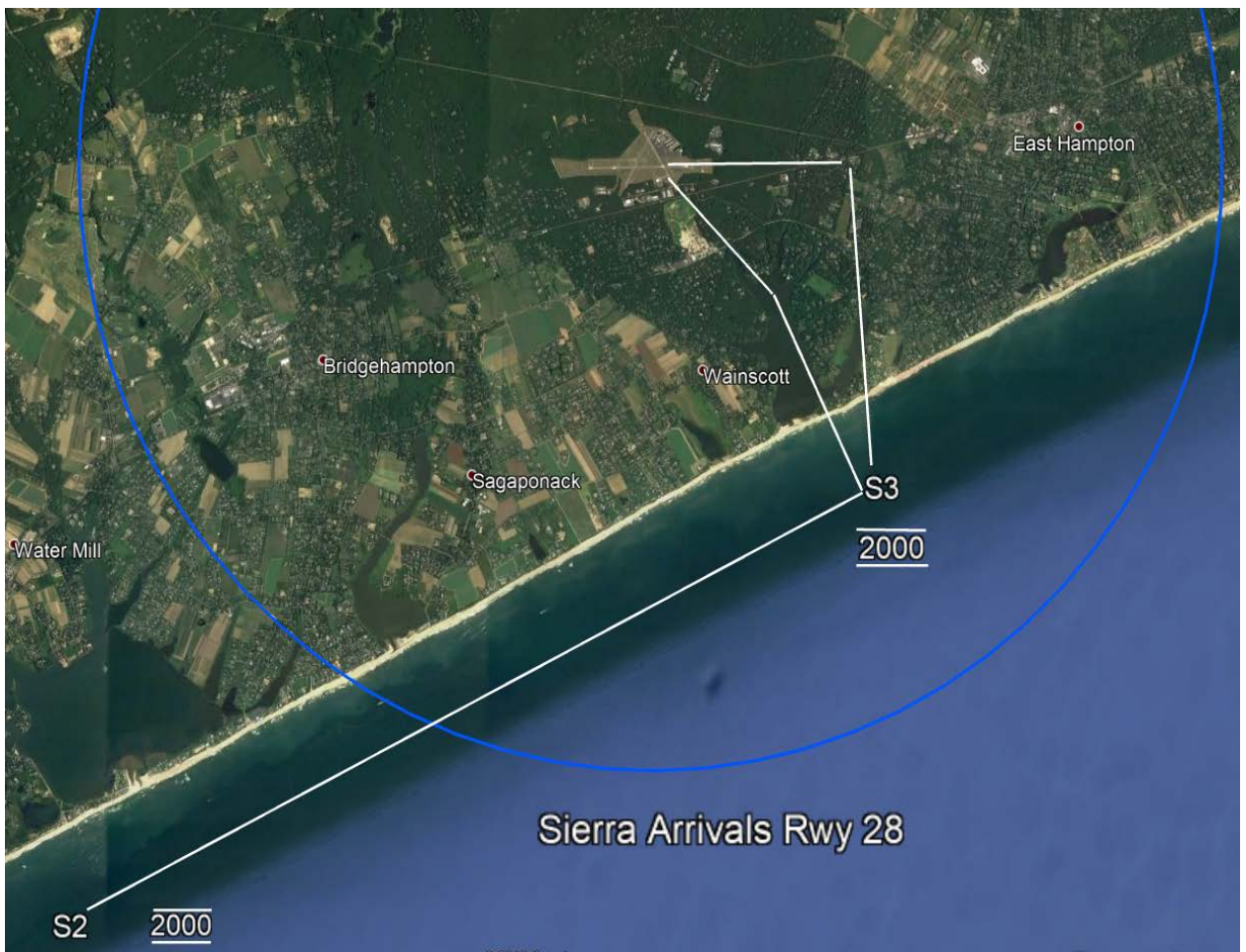
Arrivals from the northwest proceed to the southern tip of Robins Island, November 1 (N1) [N40\* 57.19 W072\*27.04] at or above 3500 feet. Continue to the sand pit at November 2 (N2) [N40\*58.23 W072\*20.25] and to the base of Long Pond, November 3 (N3) [N40\*58.16 W072\*17.32]. Maintain altitude as close in as possible for noise abatement for landing on the numbers of Runway 16.



*November Arrivals*

**Sierra Arrivals:**

**Runway 28:** Arrivals from the Southwest, fly along the south shore approximately one half mile offshore via Sierra 2 (S2) [N40°52.42' W072°20.10'] at 2000 feet. Traffic permitting, proceed past the mouth of Georgica Pond to Sierra 3 (S3) [N40°55.25' W072°12.58'] at 2000 feet and enter a left base for Runway 28. Proceed north of Runway 28 to land on the intersection of Taxiways D and E as traffic permits. When aircraft are on final for Runway 28, follow Tower instructions to land on the numbers of Runway 34.



*Sierra Arrivals Runway 28*

**Runway 10:** Fly along the south shore at 2000 feet approximately one half mile offshore to check in with Tower at Sierra 2 (S2) [N40°52.42' W072°20.10']. From there continue eastbound to follow Tower instructions for turning left to either cross over the airfield to land on the numbers of Runway 16 or south of the X on the old Runway 4. Do not cross Runway 10 until cleared by Tower. Maintain altitude as long as possible for noise abatement.



*Sierra Arrival Runway 10*



*Old Runway 4 Holding Point*

## Echo Departures:

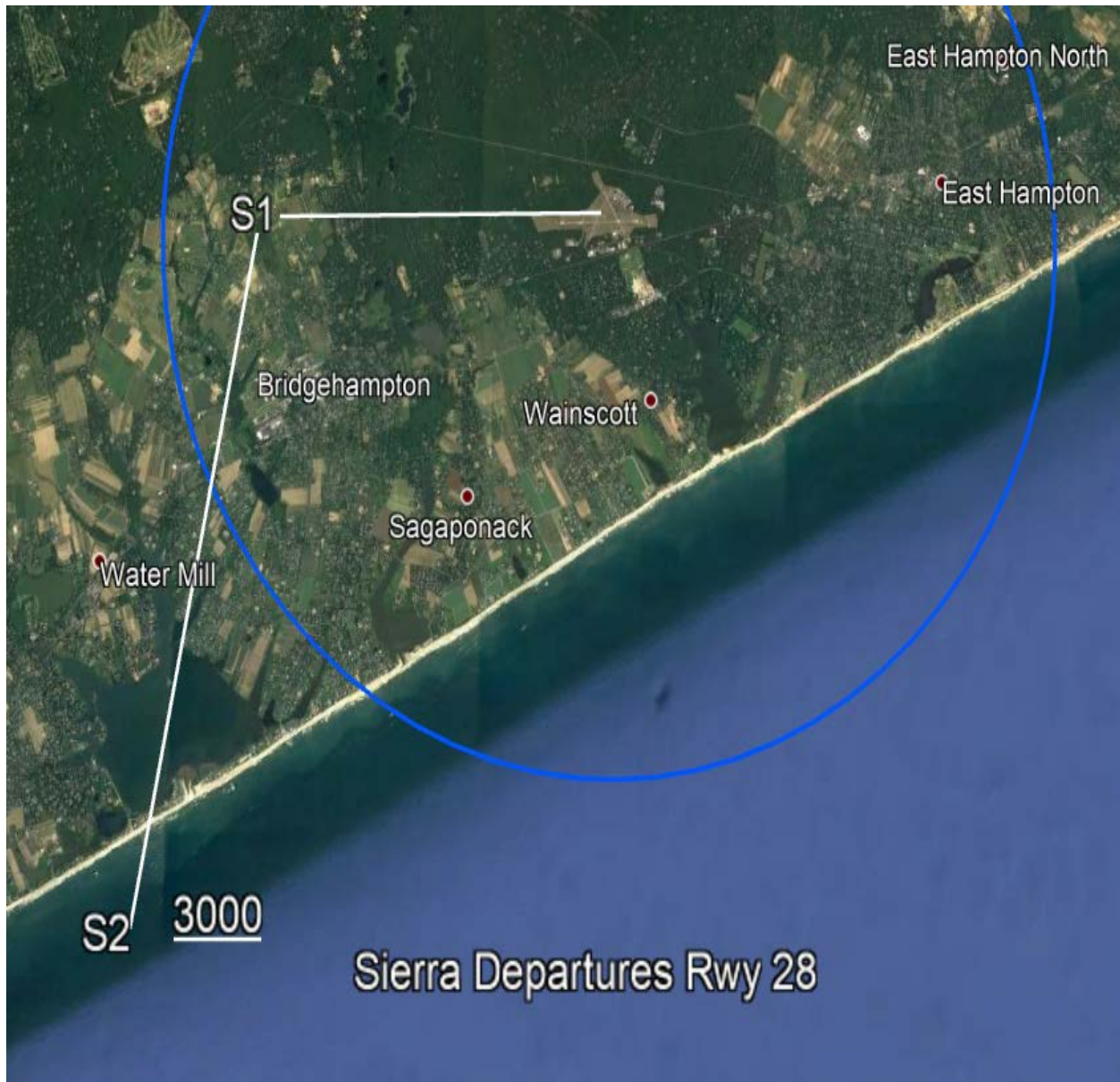
- A. **Northwest Departures:** Depart heading northwest to Echo 1 (E1) [N40°58.03 W072°16.10] at BROCC. Turn right, remaining east of Town Line Road to the east side of Barcelona Neck, Echo 2 (E2) [N41°00.42 W072°15.12]. Climb to at or above 3000 ft. Proceed to Echo 3 (E3) [41°02.40 W072°18.35] and fly through the gap between North Haven and Shelter Island to proceed westbound. Do not fly over Sag Harbor Village or Shelter Island.
- B. **Northeast Departures:** Depart heading northwest to Echo 1 (E1) [N40°58.03 W072°16.10] at BROCC. Turn right, remaining east of Town Line Road to the east side of Barcelona Neck, Echo 2 (E2) [N41°00.42 W072°15.12]. Climb to at or above 3000 ft. Proceed northeast to Echo 4 (E4) [41°10.02 W072°13.09] to either join the North Shore Helicopter Route westbound or proceed eastbound.



*Echo Departures*

## Sierra Departures:

**Runway 28:** Depart the airport via runway heading at BROCC until passing Sierra 1 (S1) [N40.57.36 W072\*19.16] then turn left to Sierra 2 (S2) [N40\*52.42 W072\*20.10] climbing at BROCC to at or above 3000 feet. Proceed on course at approximately one half mile off shore.



*Sierra Departures Runway 28*

**Runway 10:** Depart eastbound at BROCC to 1500 feet. Then turn right towards Sierra 3 (S3) [N40°55.25' W072°12.58'] at or above 3000 feet and proceed on course at approximately one half mile off shore.



*Sierra Departures Runway 10*

**PLEASE NOTE:**

**Pathways depicted on the map are for illustration only and may not conform precisely to coordinates.**

**The Control Tower will advise pilots of traffic conflicts on each of the helicopter routes and will retain the option of issuing arrival and departure instructions as traffic permits.**

**East Hampton Airport Curfew: 2300L – 0700L**

6/4/2019 Rev.2