

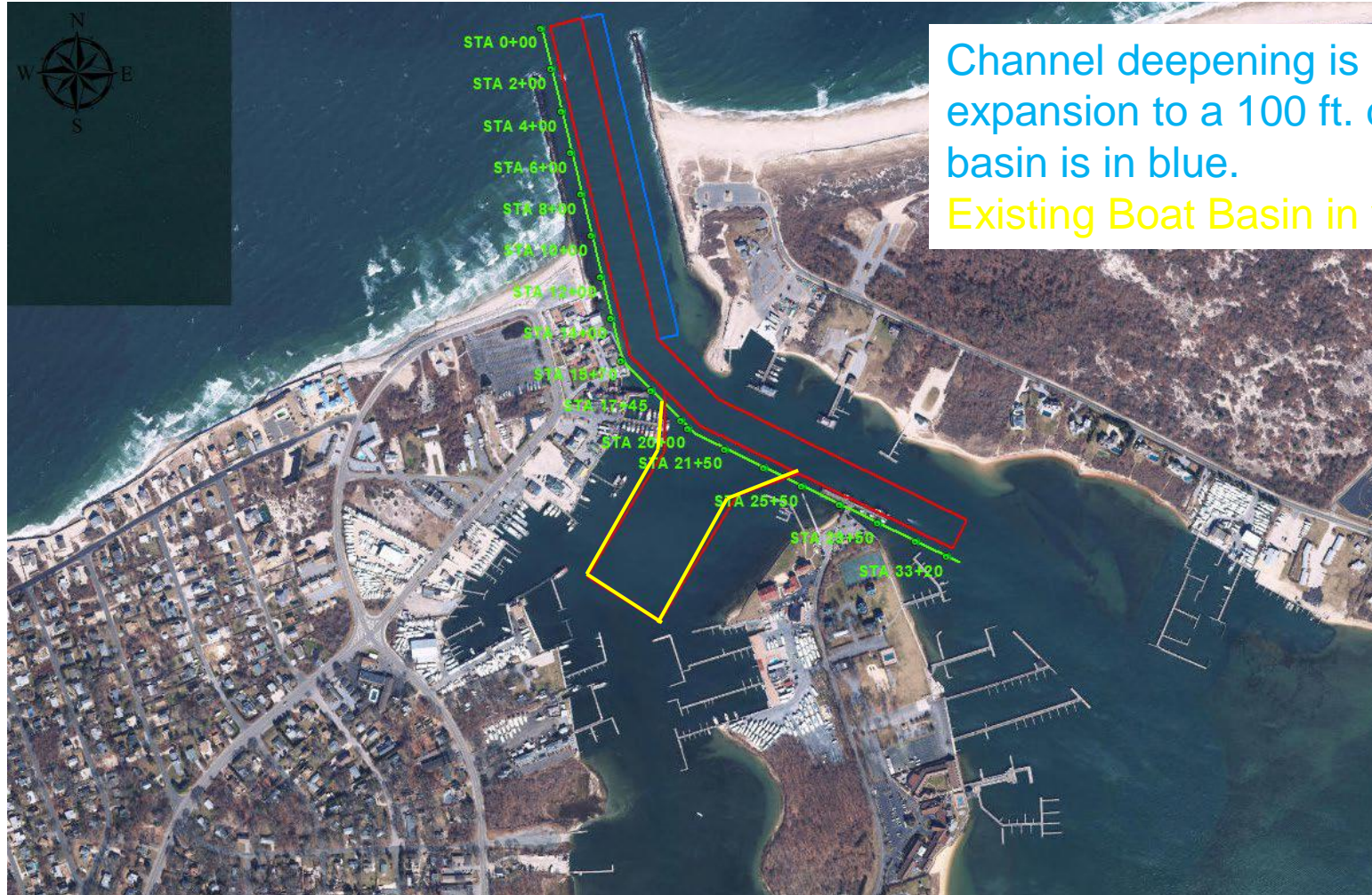
Lake Montauk Harbor
East Hampton, New York

Navigation Improvement Project

- USACE Slides for East Hampton March 2023



Lake Montauk Harbor Navigation Improvement Project (Deepening and Deposition Basin)

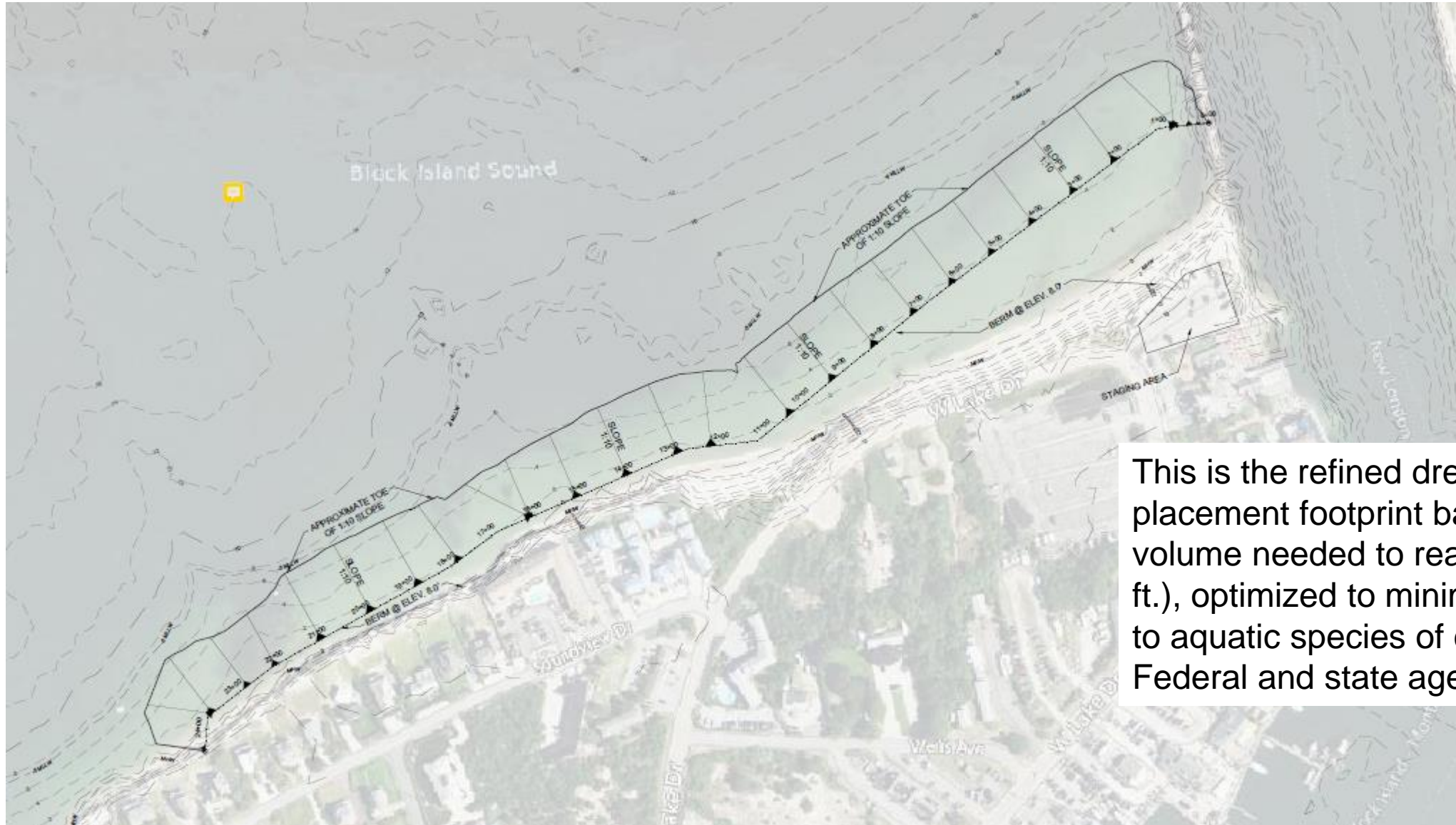


Channel deepening is in red. The expansion to a 100 ft. deposition basin is in blue. Existing Boat Basin in yellow.

Lake Montauk Harbor Navigation Improvement Project (Feasibility Report Proposed Placement Area)



Lake Montauk Harbor Navigation Improvement Project (Refined Placement Area)



This is the refined dredged material placement footprint based on the volume needed to reach -17 ft. (+2 ft.), optimized to minimize impacts to aquatic species of concern to Federal and state agencies.

Lake Montauk Harbor
East Hampton, New York

Navigation Improvement Project

- **Questions?**

- **Contact:**

- Nathanael Wales, P.E., Project Manager
- (917) 231-4394
- Nathanael.t.wales@usace.army.mil

