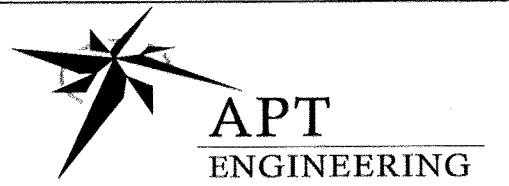




4 CENTEROCK ROAD
WEST NYACK, NY 10994



3 SADDLEBROOK DRIVE PHONE: (860)-663-1697
KILLINGWORTH, CT 06419 FAX: (860)-663-0935
WWW.ALLPOINTSTECH.COM

CONSTRUCTION DOCUMENTS

NO	DATE	REVISION
0	12/07/16	FOR REVIEW: SPM
1	02/14/17	FOR FILING: SPM
2	08/09/17	REVISED TOWER: SPM
3	08/21/17	REVISED ANT. HGT.: SPM
4	08/30/17	FOR FILING: SPM
5	09/11/18	REV. TOWER LOCATION: SPM
6	12/10/18	PER EHPD COMMENTS: SPM
7	01/31/19	PER TOWN COMMENTS: SPM

DESIGN PROFESSIONALS OF RECORD

PROF: SCOTT M. CHASSE P.E.
COMP: APT ENGINEERING
ADD: 3 SADDLEBROOK DRIVE
KILLINGWORTH, CT 06419

OWNER: TOWN OF EAST HAMPTON
ADDRESS: 159 PANTIGO ROAD
EAST HAMPTON, NY 11937

NOTE:
IT IS A VIOLATION OF NEW YORK STATE
EDUCATION LAW ARTICLE 145, SECTION
7209 (2) FOR ANY PERSON, UNLESS
ACTING UNDER THE DIRECTION OF A
LICENSED PROFESSIONAL ENGINEER OR
LAND SURVEYOR, TO ALTER AN ITEM IN
ANY WAY. IF AN ITEM BEARING THE SEAL
OF AN ENGINEER OR LAND SURVEYOR IS
ALTERED, THE ALTERING ENGINEER OR
LAND SURVEYOR SHALL AFFIX TO THE
ITEM HIS SEAL AND THE NOTATION
"ALTERED BY" FOLLOWED BY THE
SIGNATURE AND THE DATE OF SUCH
ALTERATION, AND A SPECIFIC
DESCRIPTION OF THE ALTERATION.

VERIZON AT
"WAINSCOTT"

SITE: WAINSCOTT NORTHWEST ROAD
ADDRESS: EAST HAMPTON, NY 11937

APT FILING NUMBER: NY141NB530

PROJECT CODE: 2007245727

LOCATION CODE: 181557

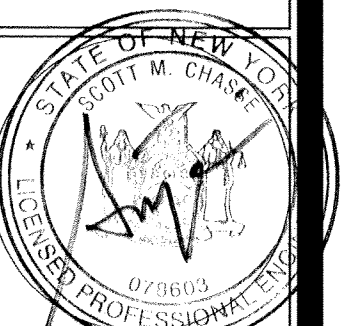
VZ CM:	KU	DRAWN BY:	CSH
DATE:	12/07/16	CHECKED BY:	SPM

SHEET TITLE:

COMPOUND
PLAN

SHEET NUMBER:

CP-1



EXIST. TOWN EQUIPMENT SHELTER TO BE REMOVED

EXIST. TOWN GENERATOR TO BE REMOVED

10' SPARK ZONE

NEW MUNICIPAL PROPANE TANK
ON NEW 5x16± CONC. PAD W/ (10)
BOLLARDS @ 4'-0" O.C. (BY OTHERS)

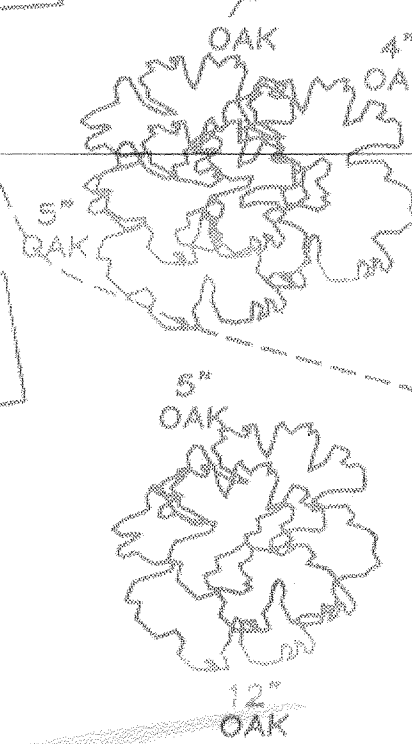
EXIST. GRAVEL DRIVEWAY
W/ (2) NEW 10x20' PARKING
SPOTS (NOT PERMANENTLY
MARKED)

EXIST. U/G ELECT. XFMR VAULT

5
E-1
NEW UNDERGROUND ELECTRIC SERVICE
FROM EXIST. MANHOLE TO NEW VERIZON
MULTIMETER RACK

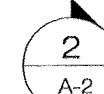
EXIST. CSC CABINET TO REMAIN

5
E-1
NEW UNDERGROUND TELCO SERVICE
FROM EXIST. CSC CABINET TO NEW
VERIZON EQUIPMENT PAD



REMOVE 52'-3"± EXIST. CHAIN LINK FENCE
W/ BARBED WIRE (TYP.)

NEW MUNICIPAL PROPANE POWERED
EMERGENCY GENERATOR ON NEW
5x12± CONC. PAD (BY OTHERS)



NEW 12x16± MUNICIPAL EQUIPMENT
SHELTER (BY OTHERS)

NEW VERIZON 200A METER &
DISCONNECT SWITCH

NEW VERIZON 10x12' (120± SF) CONCRETE
EQUIPMENT PAD W/ CANOPY (60± SF),
DIESEL GENERATOR, EQUIPMENT CABINETS
& (4) GPS UNITS.

REMOVE (2) EXIST. TREES

NEW UNDERGROUND ELECTRIC SERVICE
FROM NEW VERIZON MULTIMETER RACK TO
NEW VERIZON EQUIPMENT PAD

NEW CABLE BRIDGE W/ EAST HAMPTON
PD COAX CABLES (BY OTHERS)

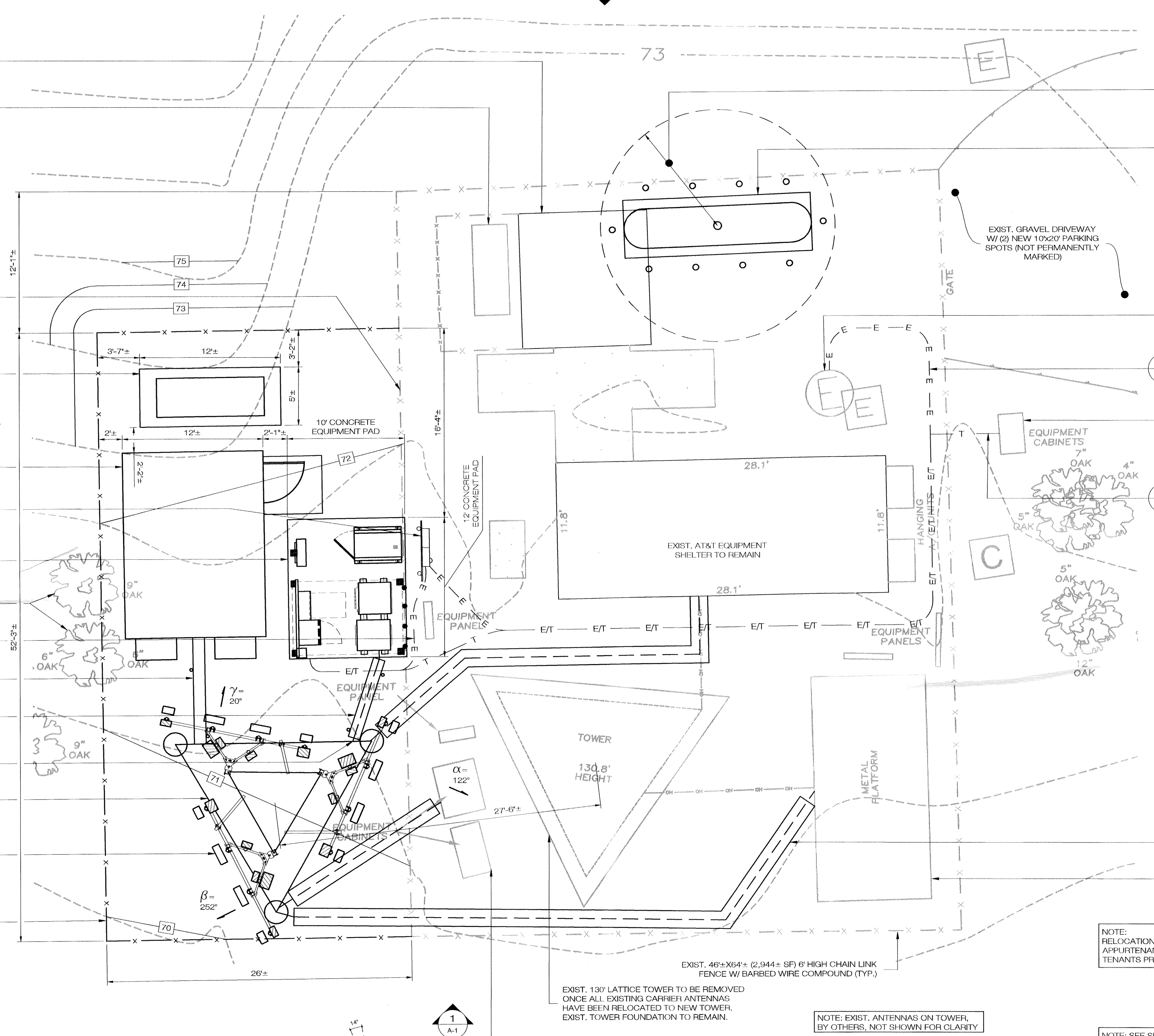
NEW VERIZON CABLE BRIDGE W/ (3) NEW
6x12 HYBRID CABLES ROUTED FROM NEW
EQUIPMENT PAD TO NEW ANTENNAS ON
NEW LATTICE TOWER (TYP.)

NEW VERIZON CABLE LADDER

NEW 130' HIGH LATTICE TOWER

(12) NEW VERIZON LATTICE TOWER MOUNTED
ANTENNAS (12± 252± 20" W/ NEW ANTENNA
MOUNTING ASSEMBLIES, (12) FRHS, (3) MDBs,
& (3) 6x12 HYBRID CABLES.

NEW 26±x52±-3"± (1,359± SF) 6' HIGH CHAIN LINK FENCE
W/ BARBED WIRE COMPOUND EXPANSION (TYP.)



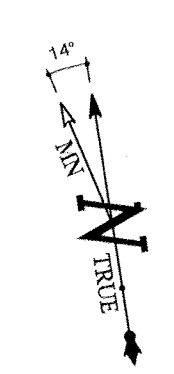
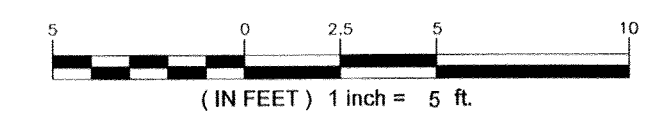
EXIST. 130' LATTICE TOWER TO BE REMOVED
ONCE ALL EXISTING CARRIER ANTENNAS
HAVE BEEN RELOCATED TO NEW TOWER.
EXIST. TOWER FOUNDATION TO REMAIN.

NOTE: EXIST. ANTENNAS ON TOWER,
BY OTHERS, NOT SHOWN FOR CLARITY

NOTE:
RELOCATION OF EXISTING CABLING, ANTENNAS,
APPURTENANCES & MOUNTS OF OTHER
TENANTS PROVIDED & PERFORMED BY OTHERS.

NOTE: SEE SHEET A-3 FOR LIST OF COLORS AND
MATERIALS FOR ALL PROPOSED EQUIPMENT

1
CP-1
COMPOUND PLAN
SCALE: 1" = 5'-0"



RECEIVED
PLANNING BOARD